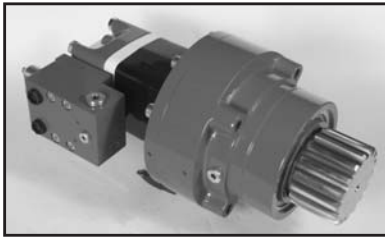
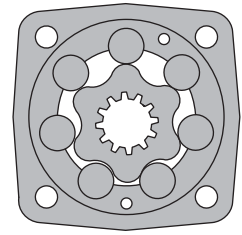


HYDRAULIC MOTOR-BRAKES SW500B350V



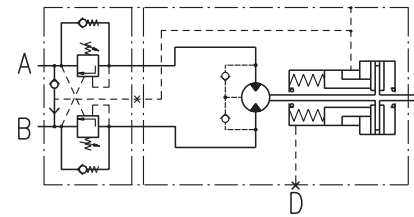
APPLICATION

- » Wheel drives
- » Conveyors
- » Rotators
- » Positioners
- » Winches
- » Swing drives
- » Door openers



CONTENTS

Specification data	37
Dimensions and mounting	38
Permissible shaft loads	38
Function diagrams	39
Order code	39



SPECIFICATION DATA

Type	SW500B350V
Displacement, cm³/rev [in³/rev]	475,3 [29]
Max. Speed, RPM	16
Cont.	
Int.*	25
Max. Torque, daNm [lb-in]	82 [7260]
Cont.	
Int.*	95 [8420]
Max. Output, kW [HP]	0,9 [1.3]
Cont.	
Int.*	2,4 [3.3]
Max. Pressure Drop, bar [PSI]	125 [1800]
Cont.	
Int.*	145 [2100]
Max. Oil Flow, lpm [GPM]	8 [2]
Cont.	
Int.*	12 [3]
Max. Return Pressure without Drain Line or Max. Pressure in Drain Line, bar [PSI]	100 [1450]
Min. Starting Torque, daNm [lb-in]	72 [6400]
At max. press. drop Cont.	
At max. press. drop Int.*	75 [6650]
Min. Speed**, RPM	5
Static Torque for the Brake***, daNm [lb-in]	164 [14 515]
Release Pressure ±10%, bar [PSI]	25...28 [363...406]
initial	
full	31 [449.6]
Max. Steering Pressure, bar [PSI]	245 [3553]
Max. Pressure in Drain Space for the Brake, bar [PSI]	0,5 [7]
Pilot Ratio for the Valve	4,25:1

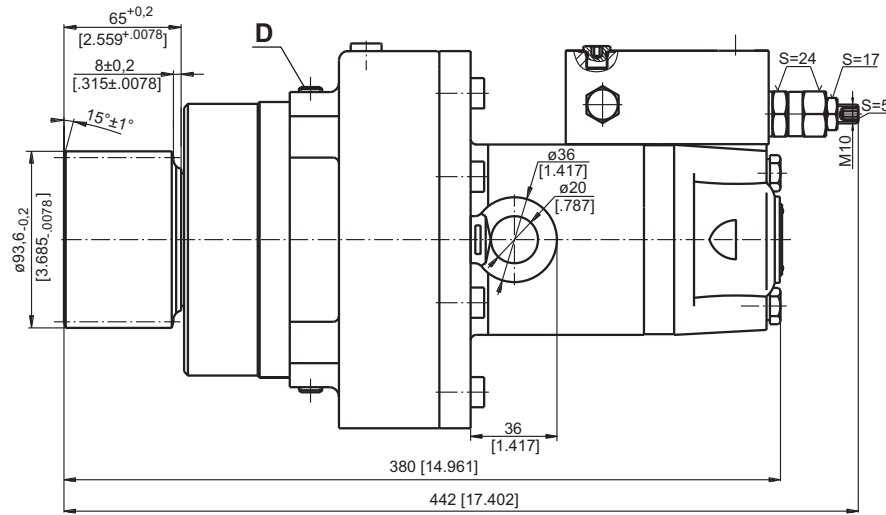
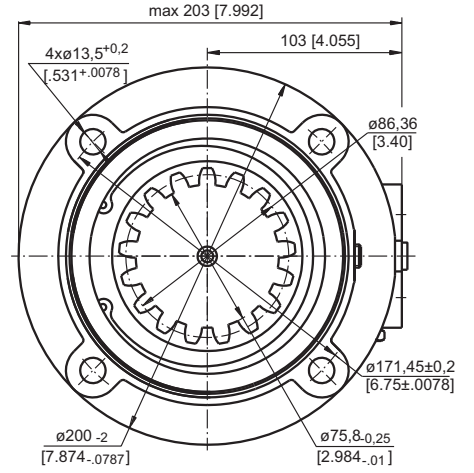
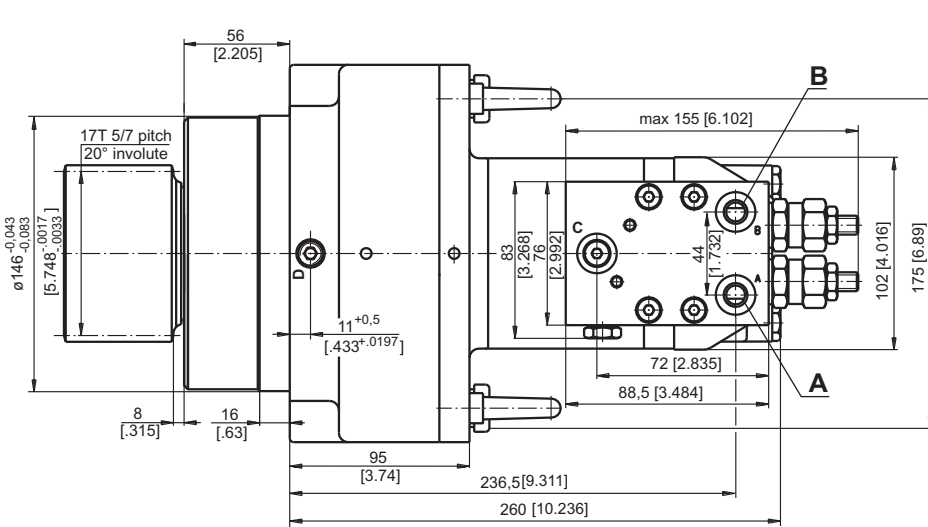
* Intermittent operation: the permissible values may occur for max. 10% of every minute.

** For speeds of 5 RPM lower than given, consult factory or your regional manager.

*** Static torque is obtained at working pressure - 0 PSI [0 bar].

Space is filled with 125±20 cm³ [7.63±1.22 in³] mineral oil HLP (DIN 51524) or HM (ISO 6743/4).

DIMENSIONS AND MOUNTING



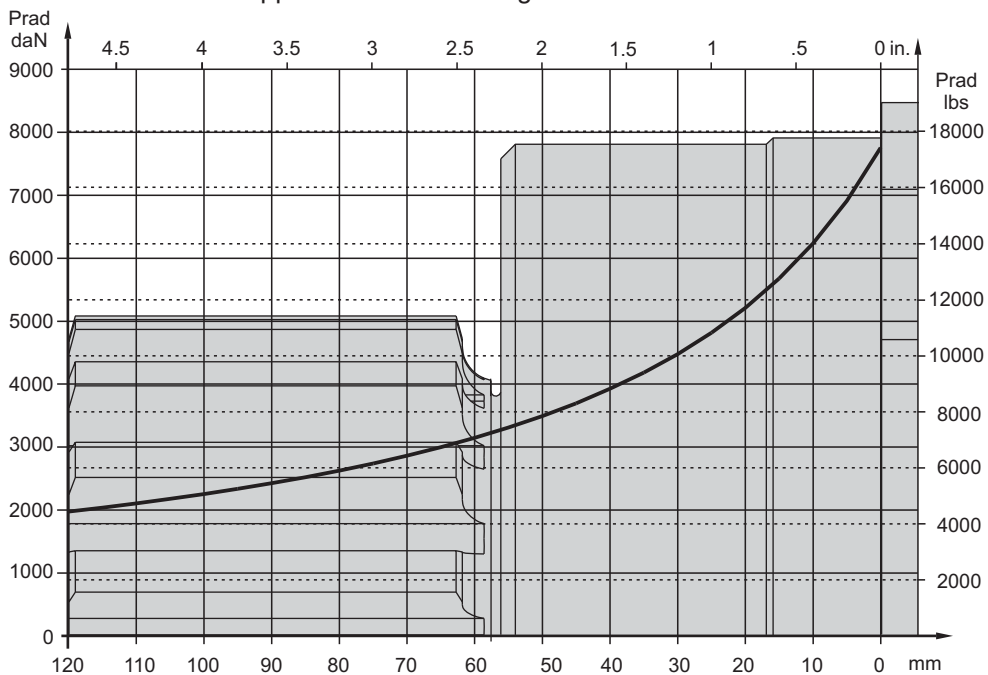
A,B: 7/16-20 UNF
D : 1/4-18 NPTF

Note: For different port's thread contact with "Bulmach Sp.z o.o".



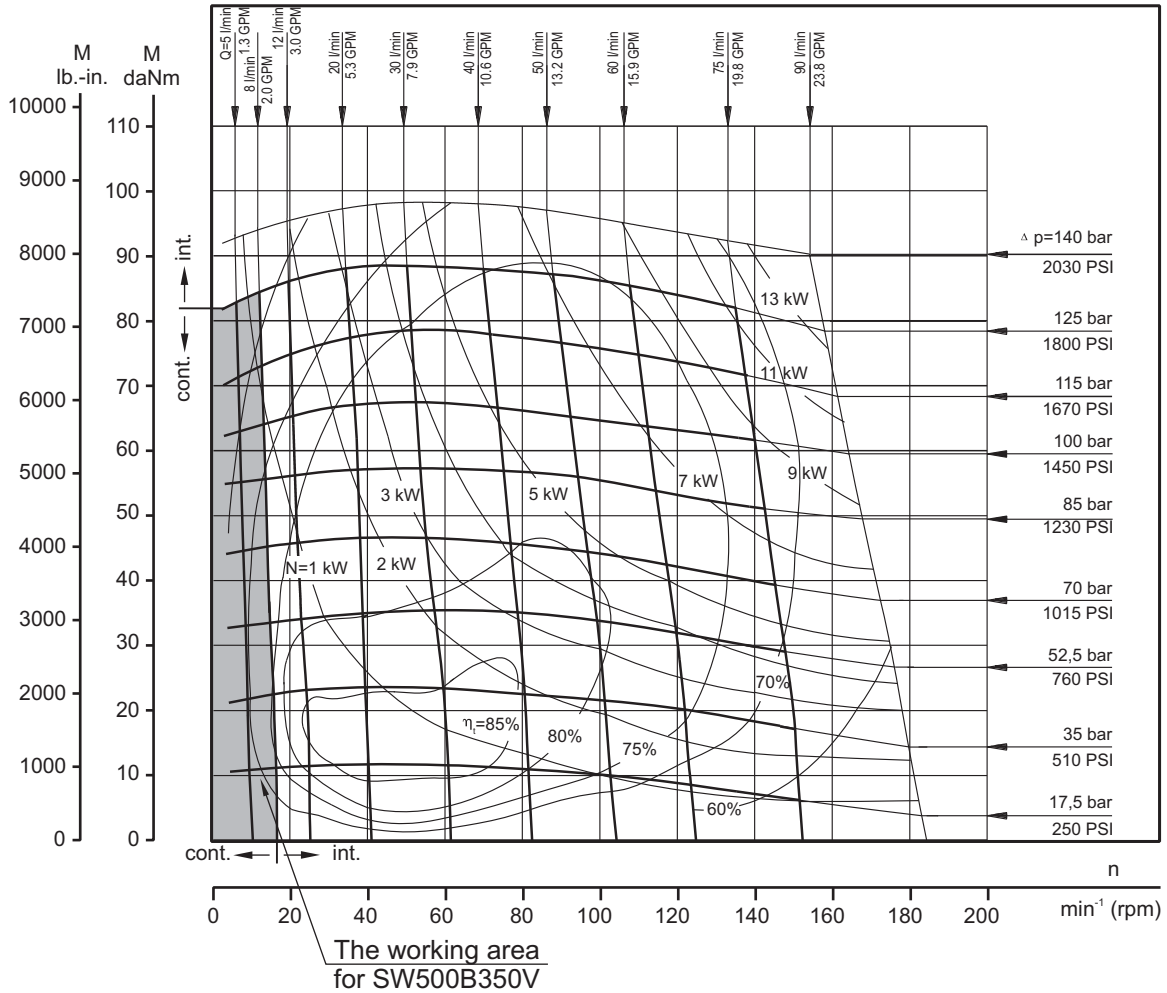
PERMISSIBLE SHAFT LOADS

The curve applies to a B10 bearing life of 3000 hours at 40 RPM.



FUNCTION DIAGRAMS

SW 500



ORDER CODE

1	2	3	4	5	6	7	8
S	W	500	B	350	V		

- Pos.1 - Type
S - Motor MLHS
- Pos.2 - Displacement code
- Pos.3 - Brake
- Pos.4 - Brake Type

- Pos.5 - Shaft Extension
omit - 17T PITCH splined
- Pos.6 - Valve
- Pos.7 - Special Features (see page 64)
- Pos.8 - Design Series
omit - Factory specified

The motor-brakes are mangano-phosphatized as standard.