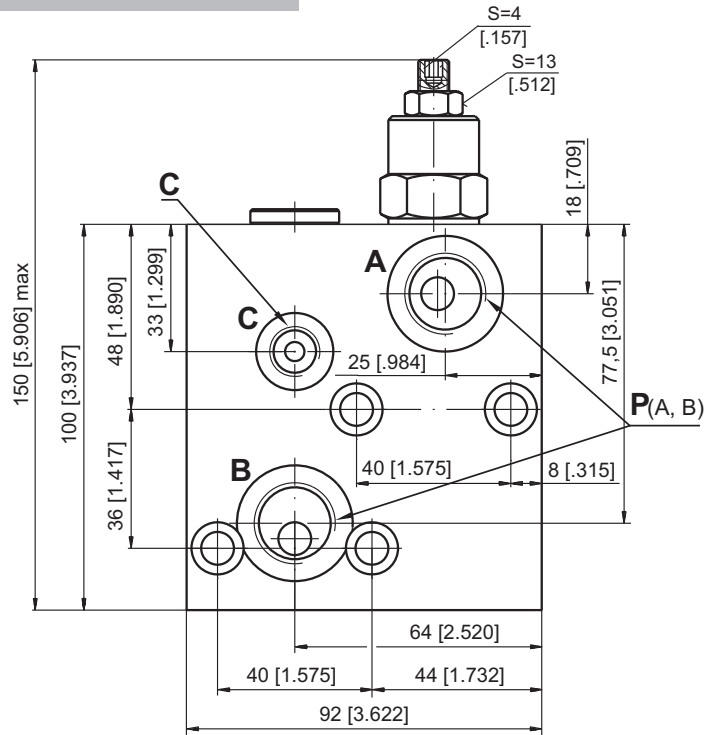
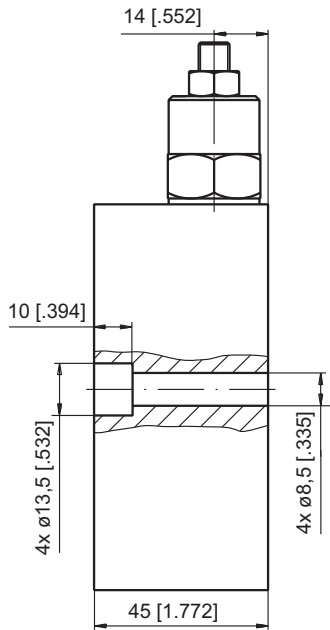
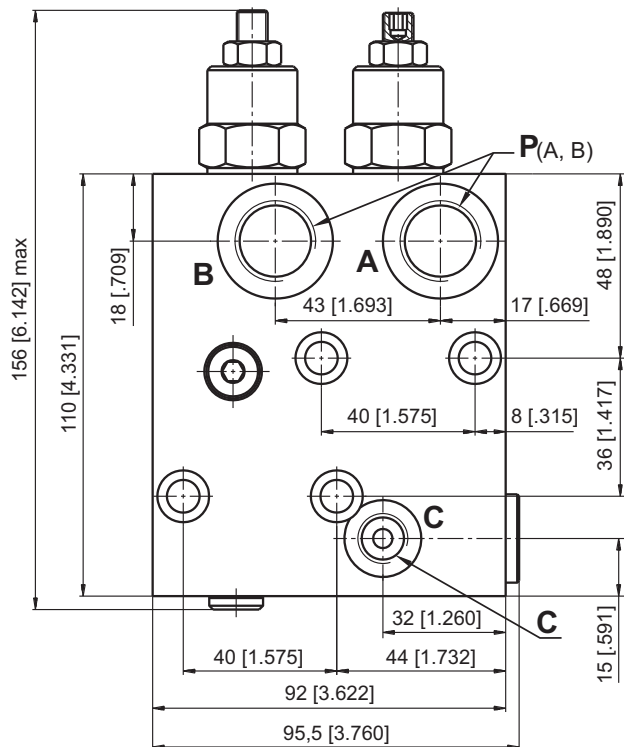
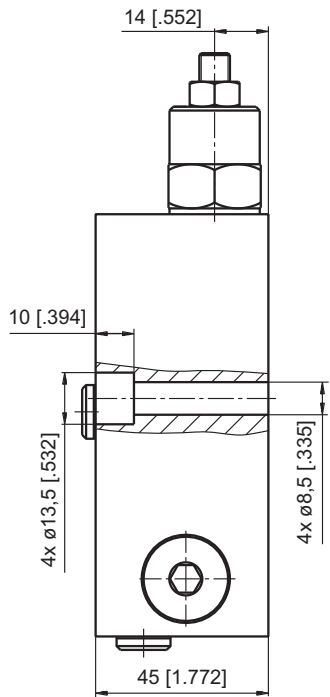


**VALVES FOR MP, MR, MH HYDRAULIC MOTORS**

**SINGLE VALVE KPBR-250/1/E...**



**DUAL VALVE KPBR-250/1/D...**



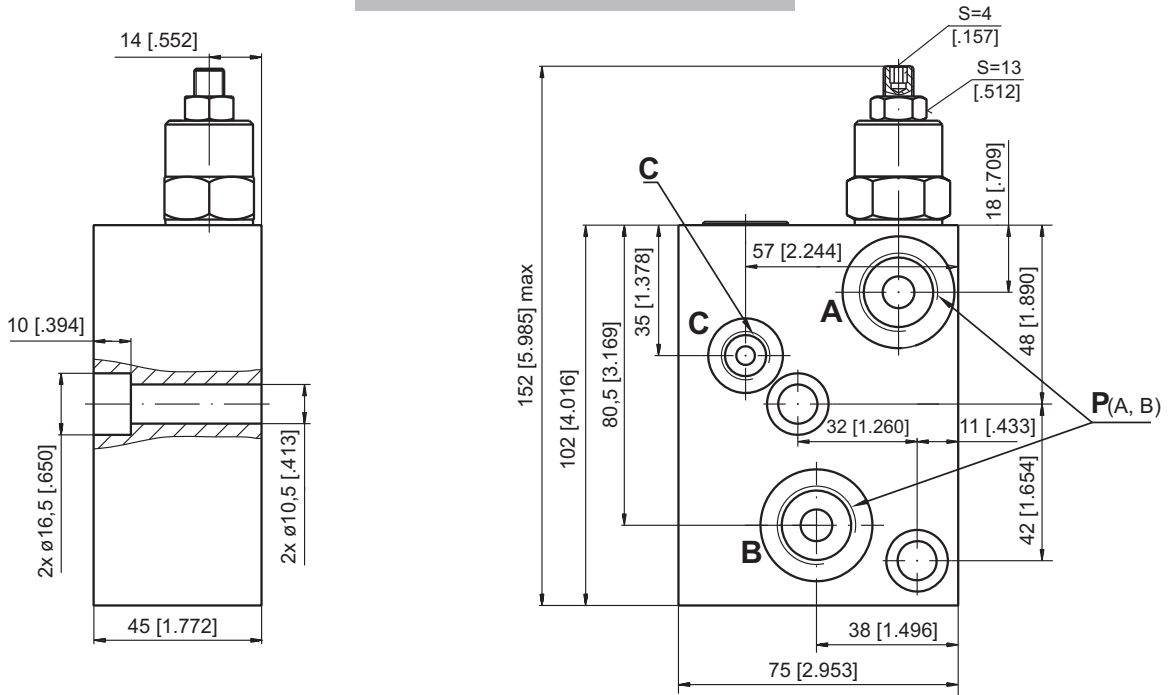
	Thread Ports - P <sub>(A,B)</sub>	Thread Port - C
-	G1/2 16 [1.63] depth	G1/4 12 [1.47] depth
M	M22x1,5 16 [1.63] depth	M14x1,5 12 [1.47] depth
A	7/8 - 14 UNF O-ring 16 [1.63] depth	7/16 - 20 UNF O-ring 12,7 [1.50] depth



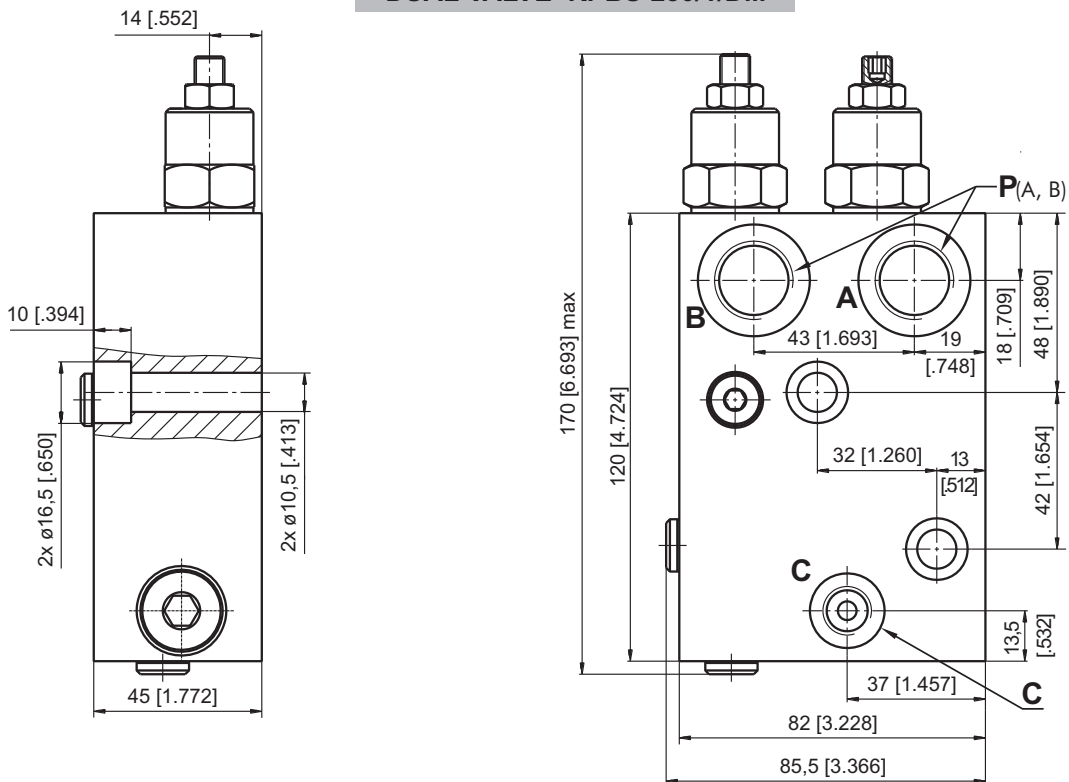
**Note :** KPBR Blocks are installed directly on MP, MR and MH Motors with four screws M8x45 - 8.8 DIN 912 or 5/16-18 UNC, 1.75 long ANSI B 18.3 . Tightening torque 2,0<sup>+0,5</sup> daNm [177<sup>+44</sup> lb-in].

**VALVES FOR MS HYDRAULIC MOTORS**

**SINGLE VALVE KPBS-250/1/E...**



**DUAL VALVE KPBS-250/1/D...**



	Thread Ports - P <sub>(A,B)</sub>	Thread Port - C
-	G1/2 16 [.63] depth	G1/4 12 [.47] depth
M	M22x1,5 16 [.63] depth	M14x1,5 12 [.47] depth
A	7/8 - 14 UNF O-ring 16 [.63] depth	7/16 - 20 UNF O-ring 12,7 [.50] depth

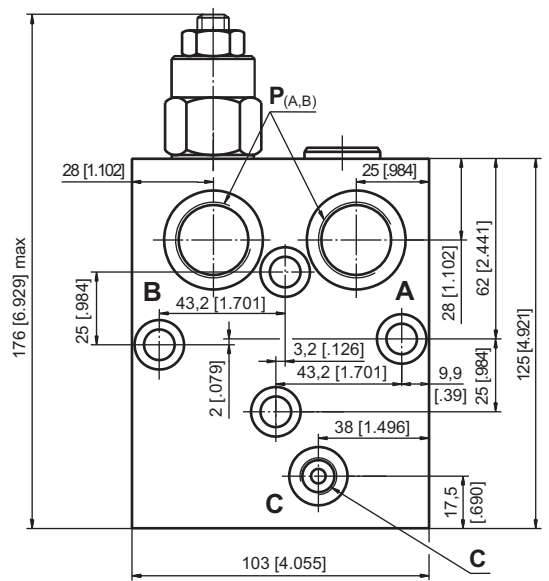
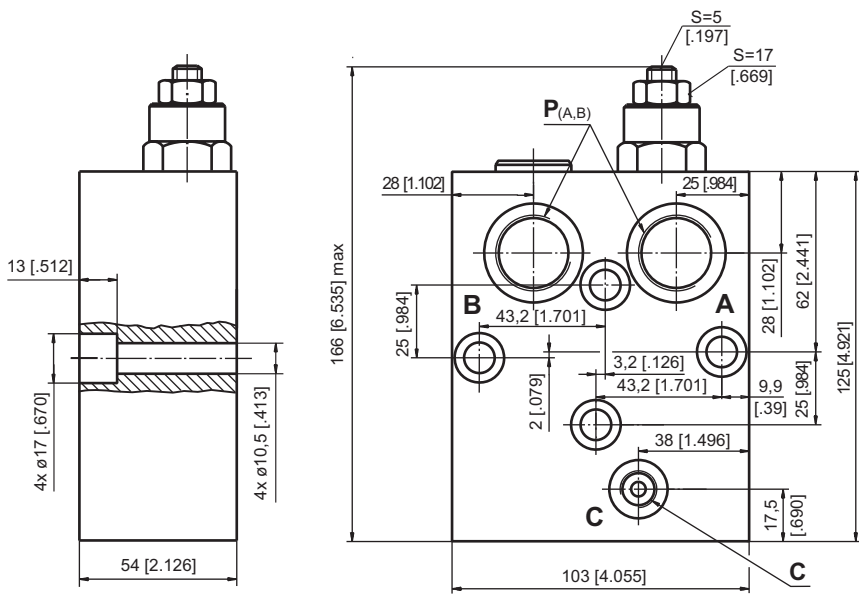


**Note :** KPBS Blocks are installed directly on MS Motors with two screws M10x45 - 8.8 DIN 912 or 3/8-16UNC, 1.75 long ANSI B 18.3 . Tightening torque 3,5 daNm [310 lb-in].

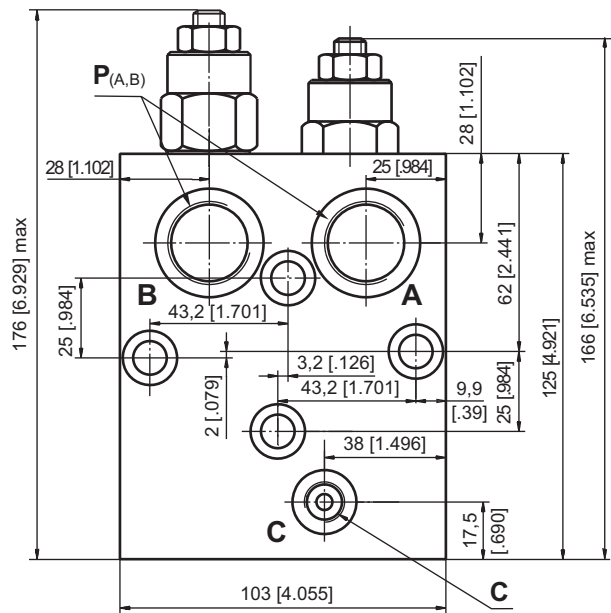
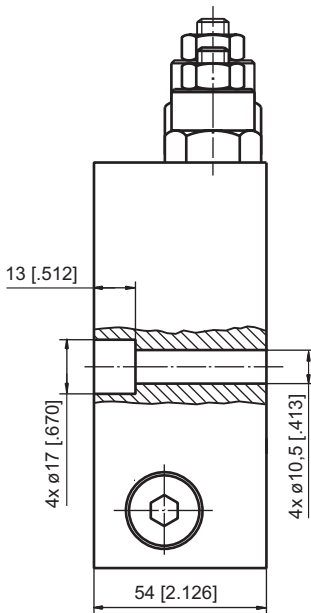
**VALVES FOR MT HYDRAULIC MOTORS**

**SINGLE VALVE KPBT-250/1/AE...**

**SINGLE VALVE KPBT-250/1/BE...**



**DUAL VALVE KPBT-250/1/D...**



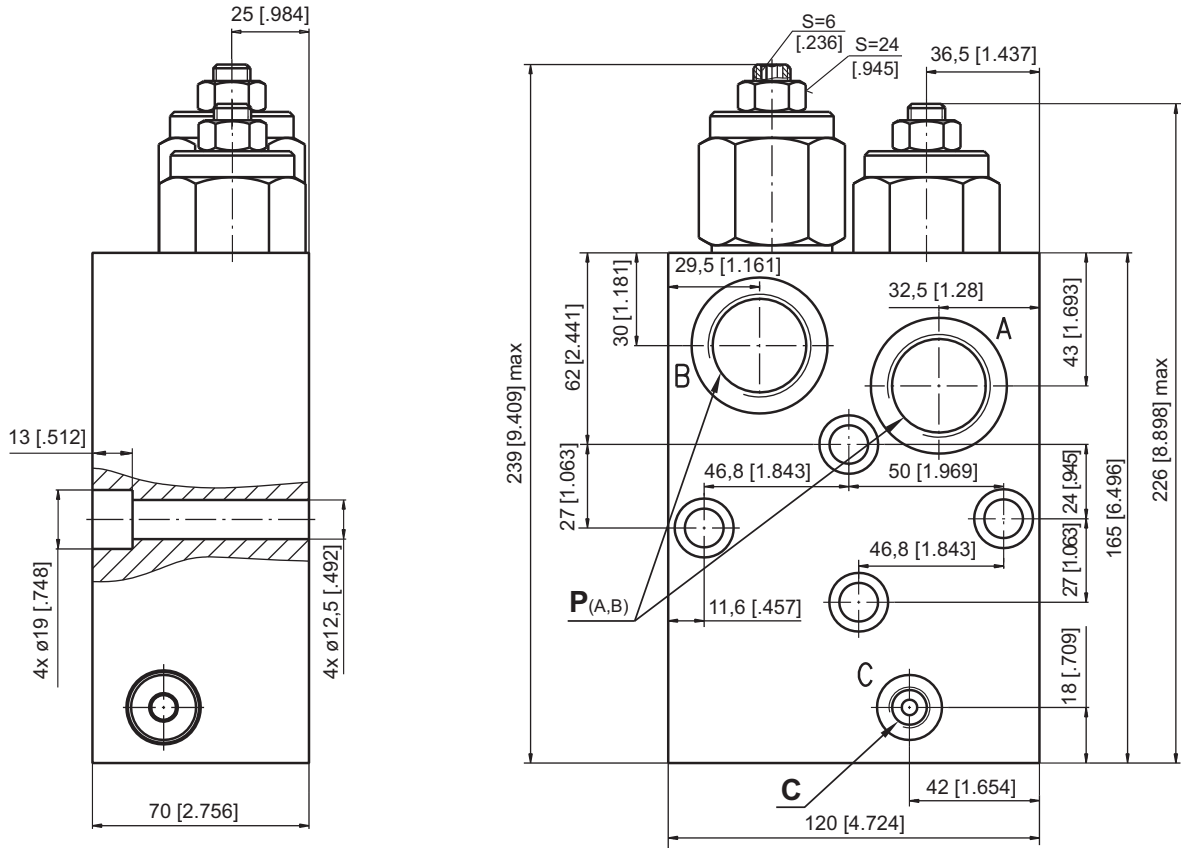
	Thread Ports - P <sub>(A,B)</sub>	Thread Port - C
-	G3/4 17 [.67] depth	G1/4 14 [.55] depth
M	M27x2 17 [.67] depth	M14x1,5 14 [.55] depth
A	1 1/16-12 UN O-ring 17 [.67] depth	7/16 - 20 UNF O-ring 12,7 [.50] depth



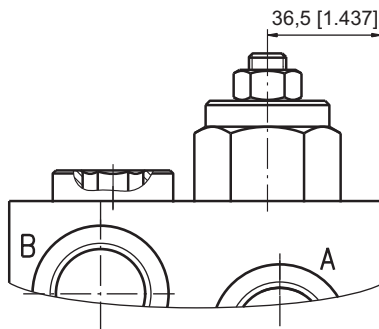
**Note :** KPBT Blocks are installed directly on MT Motors with four screws M10x50 - 8.8 DIN 912. Tightening torque 3,5 daNm [310 lb-in].

**VALVES FOR MV HYDRAULIC MOTORS**

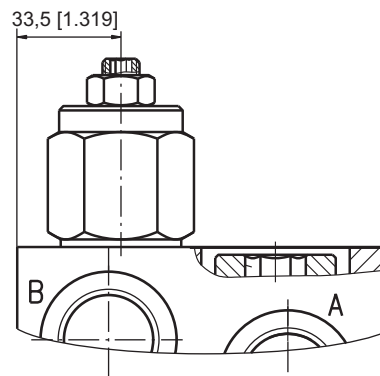
**DUAL VALVE KPBV-250/1/D...**



**SINGLE VALVE KPBV-250/1/AE...**



**SINGLE VALVE KPBV-250/1/BE...**



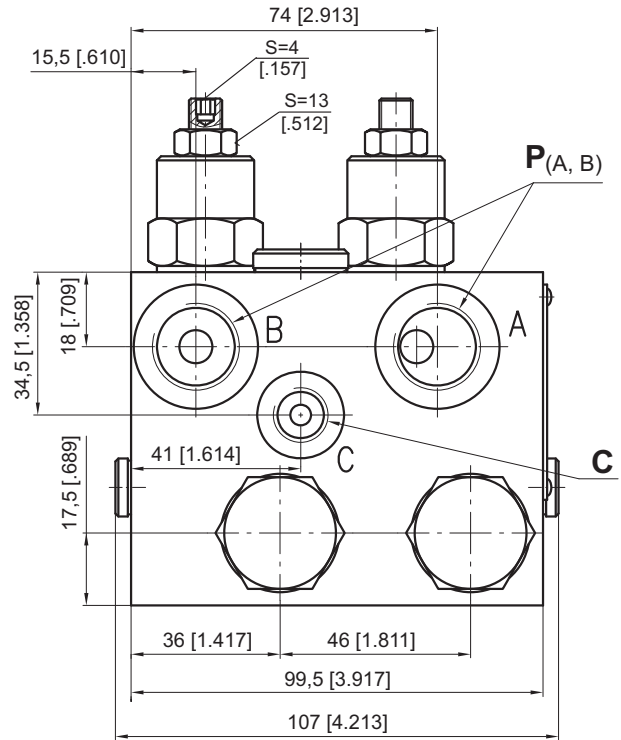
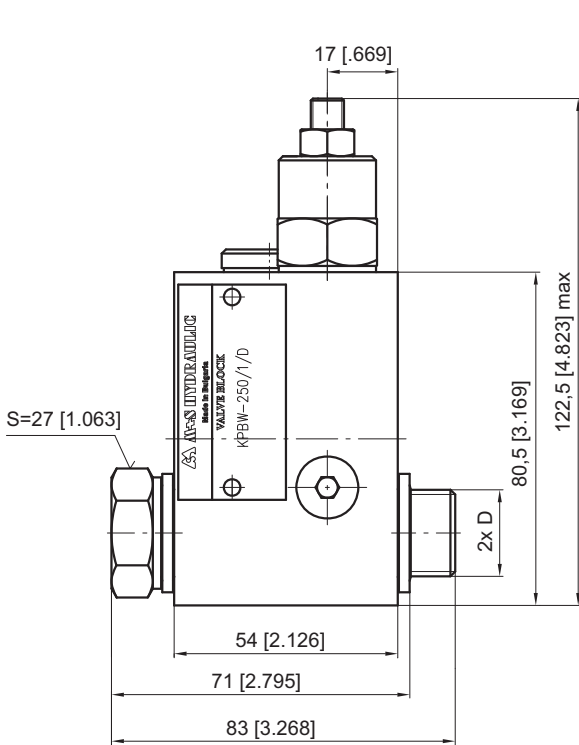
	Thread Ports - P <sub>(A,B)</sub>	Thread Port - C
-	G 1 20 [0.79] depth	G1/4 14 [0.55] depth
M	M33x2 20 [0.79] depth	M14x1,5 14 [0.55] depth
A	1 5/16 - 12 UN O-ring 20 [0.79] depth	7/16 - 20 UNF O-ring 12,7 [0.50] depth



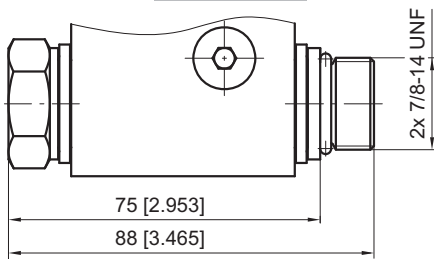
**Note :** KPBV Blocks are installed directly on MV Motors with four screws M12x70 - 8.8 DIN 912. Tightening torque 6,5 daNm [575 lb-in].

**VALVES FOR RW and HW HYDRAULIC MOTORS**

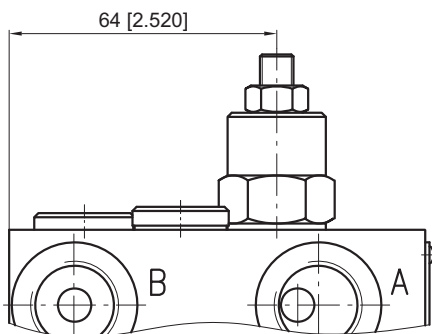
**DUAL VALVE KPBW-250/1/D...**



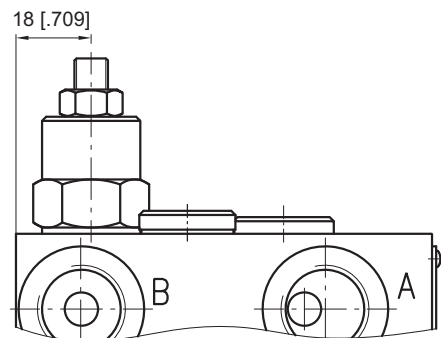
**KPBW-...A**



**SINGLE VALVE KPBW-250/1/AE...**



**SINGLE VALVE KPBW-250/1/BE...**



	Thread Ports - P <sub>(A,B)</sub>	Thread Port - C	Thread Ports - D
-	G1/2 16 [0.63] depth	G1/4 12 [0.47] depth	G1/2 12 [0.47] length
M	M22x1,5 16 [0.63] depth	M14x1,5 12 [0.47] depth	M22x1,5 12 [0.47] length
A	7/8 - 14 UNF O-ring 16 [0.63] depth	7/16 - 20 UNF O-ring 12,7 [0.50] depth	7/8 - 14 UNF O-ring 13 [0.51] length

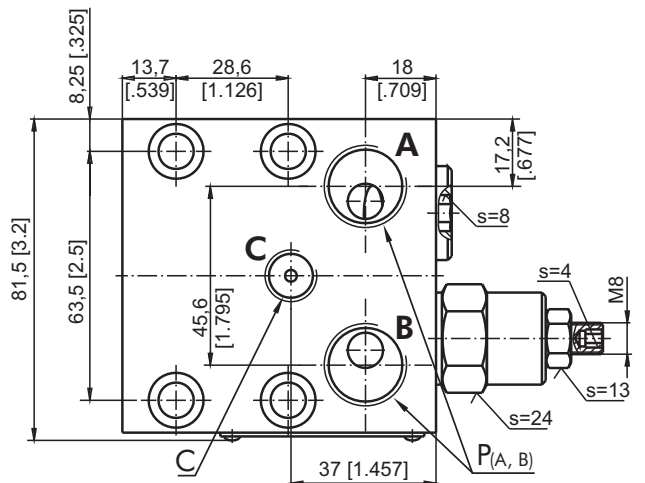
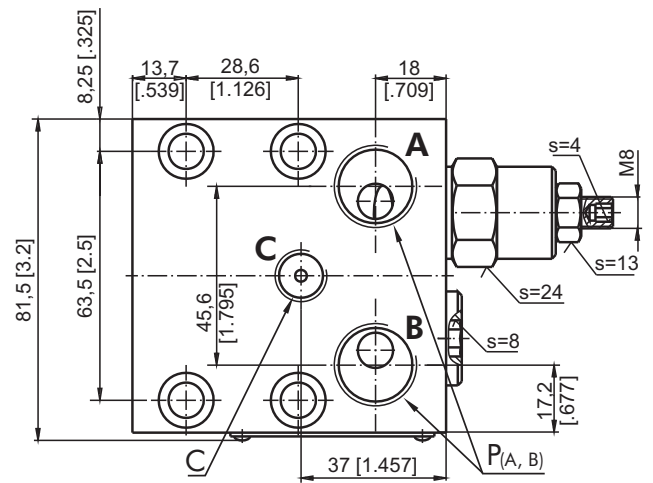
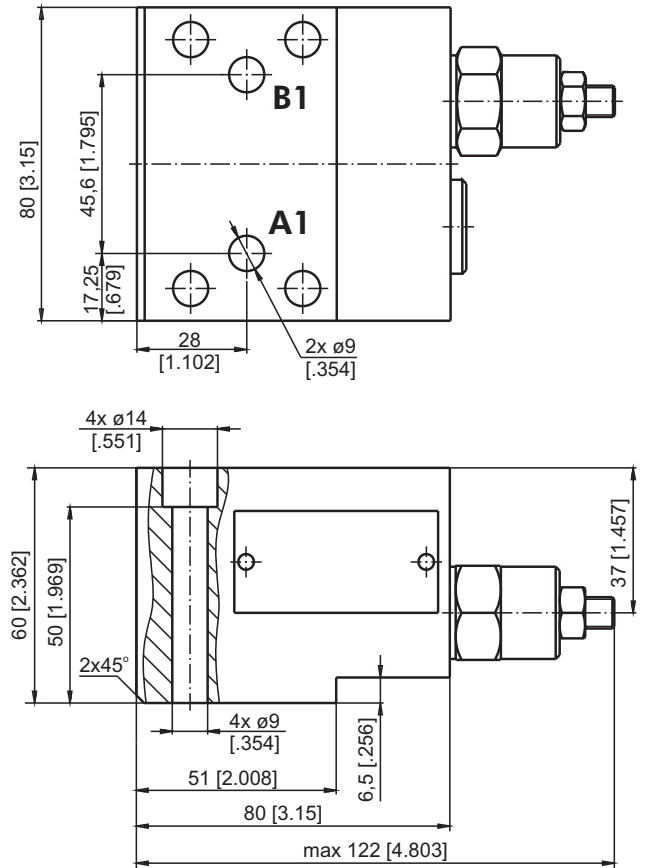
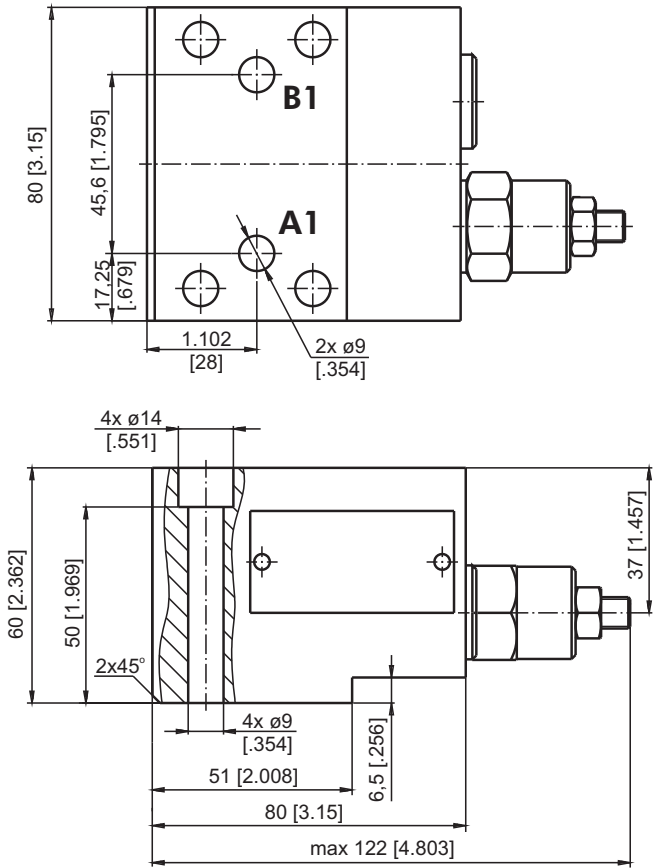


**Note :** KPBW Blocks assembly to RW or HW motors is done with two screws (thread D) included in the valve set. Tightening torque 8 daNm [710 lb-in].

**VALVES FOR HP, HR HYDRAULIC MOTORS**

**SINGLE VALVE KPBHR-250/1/AE...**

**SINGLE VALVE KPBHR-250/1/BE...**



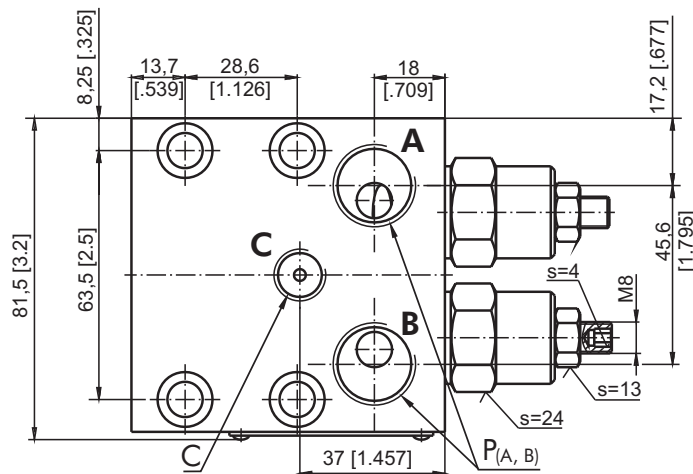
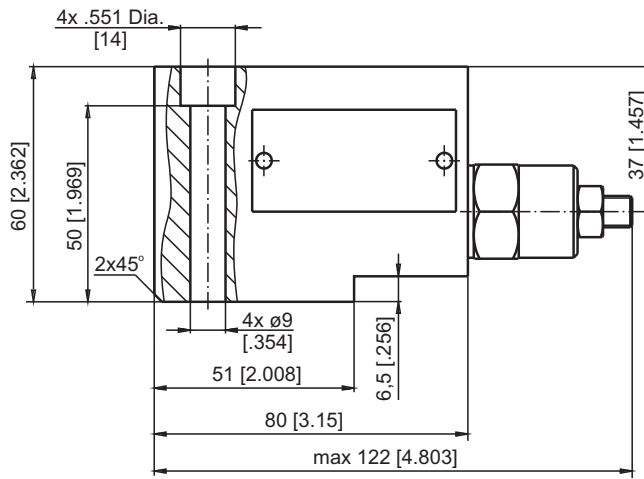
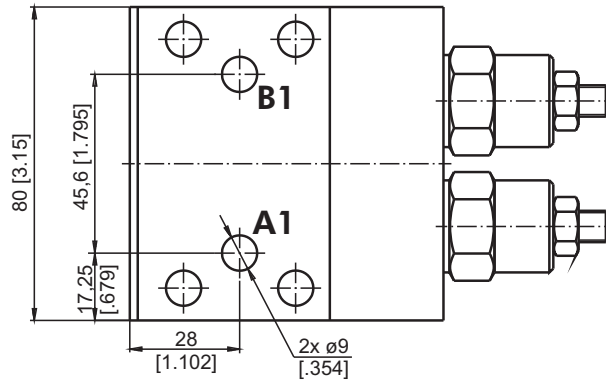
	Thread Ports - P <sub>(A,B)</sub>	Thread Ports - C
<b>A</b>	7/8 - 14 UNF O-ring 17 [.67] deep	7/16 - 20 UNF O-ring 12,7 [.50] deep
<b>-</b>	G1/2 17 [.67] deep	G1/4 14 [.55] deep
<b>M</b>	M22x1,5 17 [.67] deep	M14x1,5 14 [.55] deep



**Note :** KPBHR Blocks are installed directly on HP and HR Motors with four bolts 5/16-18UNC, 2.36 long or M8x60 - 8.8 DIN 912. Tightening torque 2,0<sup>+0,5</sup> daNm [177<sup>+44</sup> lb-in].

**VALVES FOR HP, HR HYDRAULIC MOTORS**

**DUAL VALVE KPBHR-250/1/D...**



	Thread Ports - P <sub>(A,B)</sub>	Thread Ports - C
<b>A</b>	7/8 - 14 UNF O-ring 17 [.67] deep	7/16 - 20 UNF O-ring 12,7 [.50] deep
<b>-</b>	G1/2 17 [.67] deep	G1/4 14 [.55] deep
<b>M</b>	M22x1,5 17 [.67] deep	M14x1,5 14 [.55] deep



**Note :** KPBHR Blocks are installed directly on HP and HR Motors with four bolts 5/16-18UNC, 2.36 long or M8x60 - 8.8 DIN 912. Tightening torque 2,0<sup>+0.5</sup> daNm [177<sup>+44</sup> lb-in].