

# HYDROSTATIC STEERING UNITS TYPE HKUS.../5RDT



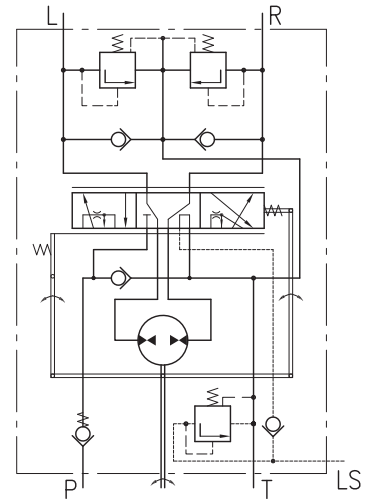
HKUS.../5RDT is a new generation steering unit with load sensing dynamic signal and integrated valve functions.

The hydraulic steering unit is applied on all types of agriculture and construction transportation vehicles which maximum speed does not exceed 60 km/h.

This steering unit has low torque and low noise.

HKUS.../5RDT works in a system with a dynamic priority valve and it is appropriate for machines with increased energy saving requirements.

The dynamic flow to LS-line allows easy and smooth control when starting steering.



Closed Center - Load Reaction  
HKUS.../5RDT

## SPECIFICATION DATA

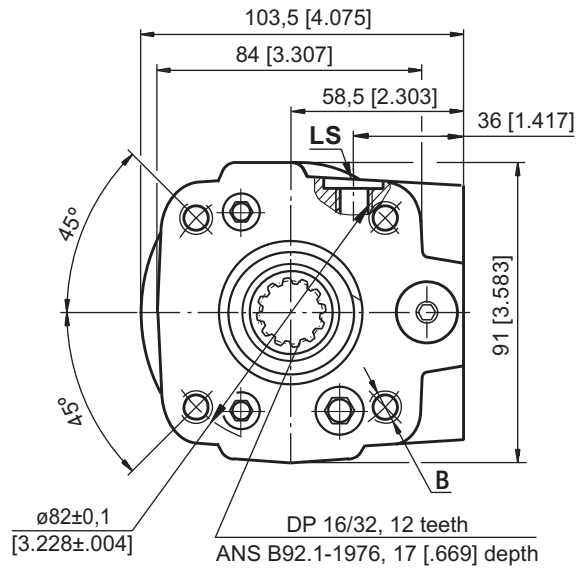
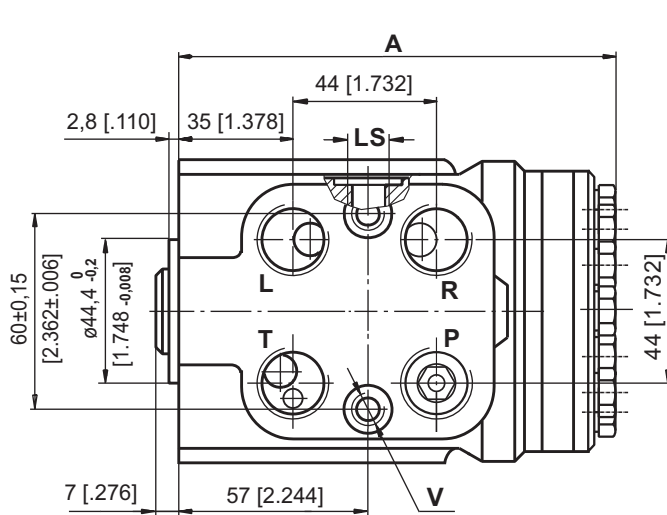
Parameters	Type								
	HKUS 40/5RDT	HKUS 50/5RDT	HKUS 63/5RDT	HKUS 80/5RDT	HKUS 100/5RDT	HKUS 125/5RDT	HKUS 160/5RDT	HKUS 200/5RDT	
Displacement	cm <sup>3</sup> /rev	39,6	49,5	65,6	79,2	99,0	123,8	158,4	198
	[in <sup>3</sup> /rev]	[2.42]	[3.0]	[4.0]	[4.83]	[6.04]	[7.56]	[9.67]	[12.1]
Rated Flow*	lpm	4	5	6	8	10	13	16	20
	[GPM]	[1.1]	[1.3]	[1.6]	[2.1]	[2.6]	[3.4]	[4.2]	[5.3]
Rated Pressure	bar	125	150	175					
	[PSI]	[1810]	[2175]	[2540]					
LS-Valve Pressure Settings**	bar [PSI]	80 [1160]		100 [1450]	125 [1810]	150 [2175]	175 [2540]		
Shock Valves Pressure Settings***	bar [PSI]	140 [2030]		160 [2320]	180 [2610]	200 [2900]	240 [3480]		
Max. Cont. Pressure in Line T	bar [PSI]								
	- standard	20 [290]							
- high pressure (H option)	40 [580]								
Max. Torque at Servoamplifying	Nm [lb-in]								
	-with standard springs	3,0 [26]							
	-with soft springs (LT option)	1,8 [16]							
Max. Torque w/o Servoamplifying	Nm [lb-in]	120 [1065]							
Weight	kg	5,3	5,4	5,5	5,6	5,7	5,8	6,0	6,3
	[lb]	[11.7]	[11.9]	[12.2]	[12.4]	[12.6]	[12.8]	[13.2]	[13.9]
Dimension A	mm	130,8	132,2	133,9	136,2	138,8	142,2	146,8	152,2
	[in]	[5.15]	[5.20]	[5.27]	[5.36]	[5.47]	[5.60]	[5.78]	[5.99]

\* Rated Flow at 100 RPM.

\*\* Pressure Settings are at flow rate of 25 lpm [6.6 GPM] and viscosity 21 mm<sup>2</sup>/s [105 SUS] at 50°C [122°F], supplied through priority valve.

\*\*\* Pressure Settings are at flow rate of 2 lpm [.53 GPM] and viscosity 21 mm<sup>2</sup>/s [105 SUS] at 50°C [122°F].

**DIMENSIONS AND MOUNTING DATA**



Code	Ports - P*, T, R, L Thread	Column Mounting Thread - B	Valve Mounting Thread- V	LS - Port
-	G1/2 17 [.67] depth	4 x M10 18 [.71] depth	2 x M10x1 16 [.63] depth	G1/4 14 [.55] depth
M	M22x1,5 17 [.67] depth	4 x M10 18 [.71] depth	2 x M10x1 16 [.63] depth	G1/4 14 [.55] depth
MBO	M18x1,5 O-ring 17 [.67] depth	4 x M10 18 [.71] depth	2 x M10x1 16 [.63] depth	M12x1,5 O-ring 11,5 [.45] depth
A	3/4 - 16 UNF O-ring 17 [.67] depth	4 x 3/8 - 16 UNC 15,7 [.62] depth	2 x 3/8 - 24 UNF 14,2 [.56] depth	7/16 - 20 UNF O-ring 12,7 [.50] depth

\*Threaded Ports Pmin 15 [.59] depth for pipe mounting.



**ORDER CODE for HKUS.../5RDT**

1	2	3	4	5	6	7	8
HKUS	/	5R	D	T	-		

- Pos.1 - Displacement code**
  - 40** - 39,6 cm<sup>3</sup>/rev [ 2.42 in<sup>3</sup>/rev]
  - 50** - 49,5 cm<sup>3</sup>/rev [ 3.00 in<sup>3</sup>/rev]
  - 63** - 65,6 cm<sup>3</sup>/rev [ 4.00 in<sup>3</sup>/rev]
  - 80** - 79,2 cm<sup>3</sup>/rev [ 4.83 in<sup>3</sup>/rev]
  - 100** - 99,0 cm<sup>3</sup>/rev [ 6.04 in<sup>3</sup>/rev]
  - 125** - 123,8 cm<sup>3</sup>/rev [ 7.56 in<sup>3</sup>/rev]
  - 160** - 158,4 cm<sup>3</sup>/rev [ 9.67 in<sup>3</sup>/rev]
  - 200** - 198,0 cm<sup>3</sup>/rev [12.10 in<sup>3</sup>/rev]
- Pos.2 - Version**
  - 5R** - Version 5R "Closed Center - Reaction"
- Pos.3 - Signal Type**
  - D** - Dynamic Load Signal
- Pos.4 - Signal Type**
  - T** - Piping Mount
- Pos.5 - Relief Valve Pressure Settings on LS-line, bar**
  - 80, 100, 125, 150, 175**

- Pos.6 - Ports**
  - omit - BSPP (ISO 228)
  - M** - Metric (ISO 262)
  - MBO** - Metric (ISO 6149-1)
  - A** - SAE (ANSI B1.1-1982)
- Pos.7 - Input torque**
  - omit - Standard
  - LT\*** - Low
- Pos.8 - Option (Paint)\***
  - omit - No Paint
  - P** - Painted
  - PC** - Corrosion Protected Paint
  - PS** - Special Paint\*\*
  - PCS** - Special Corrosion Protected Paint\*\*
- Pos.9 - Design Series**
  - omit - Factory specified

**Notes:** \* Colour at customer's request.  
 \*\* Non painted feeding surfaces, colour at customer's request.  
 The steering units are manganese-phosphatized as standard.